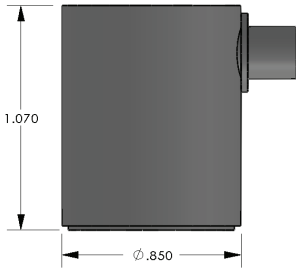


PRODUCT DATA SHEET

ISPKWDI Sensor
Intrinsically Safe Sensor



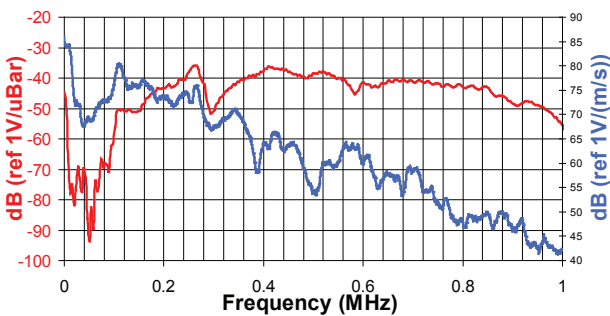
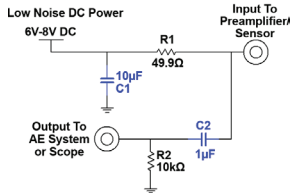
DESCRIPTION AND FEATURES

ISPKWDI is a wideband sensor with an integral ultra low noise and low power preamplifier. It is designed to meet the intrinsic safety (IS) standards (when used with our 1281-IS AE interface), and IP65 environmental requirements. The bandpass filtered preamplifier has a gain of 26 dB and can drive up to 200 meters of cable. This sensor represents an improvement in both noise and power consumption. With noise level below 3 μ V and power consumption as little as 25 mW, the sensor is ideal for use with battery powered portable equipment. The ISPKWDI features an anodized aluminum cavity with an SMA connector exiting to the side. The preamplifier features an auto sensor testing (Tone Burst AST) feature through which the sensor can be used both as pulser and receiver.

APPLICATIONS

The sensor can be used in any application with a noisy environment and requiring a small, wide-band frequency response. It can easily be mounted using epoxy and can be mounted in small and tight spaces.

Power/Signal Connections



OPERATING SPECIFICATIONS

Dynamic

Peak Sensitivity, Ref V/(m/s).....	84 dB
Peak Sensitivity, Ref V/ μ bar.....	-34 dB
Operating Frequency Range.....	200-900 kHz
Resonant Frequency, Ref V/(m/s).....	125 kHz
Directionality.....	+/- 1.5 dB

Environmental

Temperature Range.....	-65 to 80°C
Shock Limit.....	500 g
Completely enclosed crystal for RFI/EMI immunity	

Physical

Dimensions.....	0.85" OD X 1.072" H
	21 mm OD X 27 mm H
Weight.....	26 grams
Case Material.....	Anodized Aluminum
Face Material.....	Ceramic
Seal.....	Epoxy
Connector.....	SMA
Connector Locations.....	Side

Electrical

Gain.....	26 dB
Preamp DC power.....	5 V
Grounding.....	Case Grounding (isolated from mounting surface)
Noise level at input.....	<3 μ V
Preamplifier Dynamic Range.....	>87 dB
Preamplifier Impedance.....	50 Ω

ORDERING INFORMATION AND ACCESSORIES

ISPKWDI.....	ISPKWDI
Magnetic Hold-Down.....	MHPK15I
IS Barrier/Preamplifier Interface.....	1281
Cable (specify length in 'XX' m).....	1281 IS cable-XX (SMA/BNC)
Amplifier Subsystems.....	AE2A, AE5A

Sensors include

NIST Calibration Certificate & Warranty

* AST — Auto Sensor Testing feature allows AE systems to control the sensor as a pulser and a receiver at the same time. It can therefore characterize its own condition as well as send out a simulated acoustic emission wave that other sensors can detect, so the condition of the nearby sensors also can be tested.



WORLDWIDE HEADQUARTERS:
195 Clarksville Rd •
Princeton Jct, NJ 08550 • USA
T: +1.609.716.4000 • F: +1.609.716.0706
E-MAIL: sales.systems@mistrasgroup.com

CANADA T: +1.403.556.1350
CHINA T: +86.10.5877.3672
FRANCE T: +331.498.26040
GERMANY T: +49.040.2000.4025
GREECE T: +30.210.2846.801

HOLLAND T: +31.010.245.0325
INDIA T: +91.22.2586.2444
JAPAN T: +81.33.498.3570
MIDDLE EAST T: +44(0)1954.231.612
RUSSIA T: +7495.789.4549

SCANDINAVIA T: +46(0)31.252040
S. AMERICA T: +55.11.3082.5111
UK T: +44(0)1954.231.612