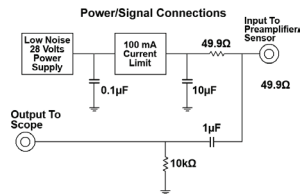
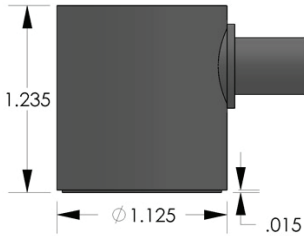


PRODUCT DATA SHEET

WDI-AST Sensor
Integral Preamplifier Sensor



DESCRIPTION AND FEATURES

PAC's integral preamp sensors were specifically engineered to attain high sensitivity and have the capability to drive long cables without the need for a separate preamplifier. Incorporating a low-noise input, 40 dB preamplifier and a filter all inside the sensor housing, these transducers are completely enclosed in metal stainless steel (or aluminum) housings that are treated to minimize RFI/EMI interference. Care has also been taken to thermally isolate the critical input stage of the preamplifier in order to provide excellent temperature stability over the range of -35° to 75° C.

Their integrated Auto Sensor Test (AST*) capability allows these sensors to pulse as well as receive. This feature lets you verify the sensor coupling and performance at any time throughout the test.

APPLICATIONS

Wideband sensors are typically used in research applications and other applications where a high fidelity AE response is required. In research applications, wideband AE sensors are useful where frequency analysis of the AE signal is required and to help determine the predominant frequency band of AE sources for noise discrimination and selection of a suitable lower cost, general purpose AE sensor. In high fidelity applications, wideband sensors can detect various AE wavemodes to provide more information about the AE source and distance of the AE event.

OPERATING SPECIFICATIONS

Dynamic

Peak Sensitivity, Ref V/(m/s) 96 dB
 Peak Sensitivity, Ref V/µbar -25 dB
 Operating Frequency Range 200-900 kHz
 Directionality +/-1.5 dB

Environmental

Temperature Range -35 to 75°C
 Shock Limit 500 g
 Completely enclosed crystal for RFI/EMI immunity

Physical

Dimensions 1.13"OD X 1.16" H
 29 mm OD X 30 mm H
 Weight 70 grams
 Case Material Stainless Steel (304)
 Face Material Ceramic
 Connector BNC
 Connector Locations Side

Electrical

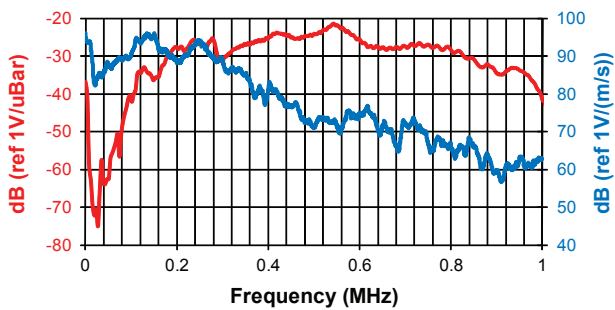
Gain 40 dB
 Power Requirements 20-30 VDC @ 25 mA
 Dynamic Range > 87 dB
 Noise Level (RMS RTI) < 3 µV
 Output Drive Impedance 50 Ω
 Grounding Case Grounding,
 Isolated from mounting surface

ORDERING INFORMATION AND ACCESSORIES

WDI-AST WDI-AST
 Cable (specify length in 'XX' m at end of PN) 1234 - X
 Magnetic Hold-Down MHR6I
 Amplifier Subsystems AE2A, AE5A

Sensors include

NIST Calibration Certificate & Warranty



WORLDWIDE HEADQUARTERS:
 195 Clarksville Rd •
 Princeton Jct, NJ 08550 • USA
 T: +1.609.716.4000 • F: +1.609.716.0706
 E-MAIL: sales.systems@mistrasgroup.com

CANADA T: +1.403.556.1350
CHINA T: +86.10.5877.3631
FRANCE T: +331.498.26040
GERMANY T: +49.040.2000.4025
GREECE T: +30.210.2846.801-4

HOLLAND T: +31.010.245.0325
INDIA T: +91.22.2586.2444
JAPAN T: +81.33.498.3570
MALAYSIA T: +60.9.517.3788
MIDDLE EAST T: +973.17.729.356

RUSSIA T: +7495.789.4549
SCANDINAVIA T: +46(0)31.252040
S. AMERICA T: +55.11.3082.5111
UK T: +44(0)1954.231.612